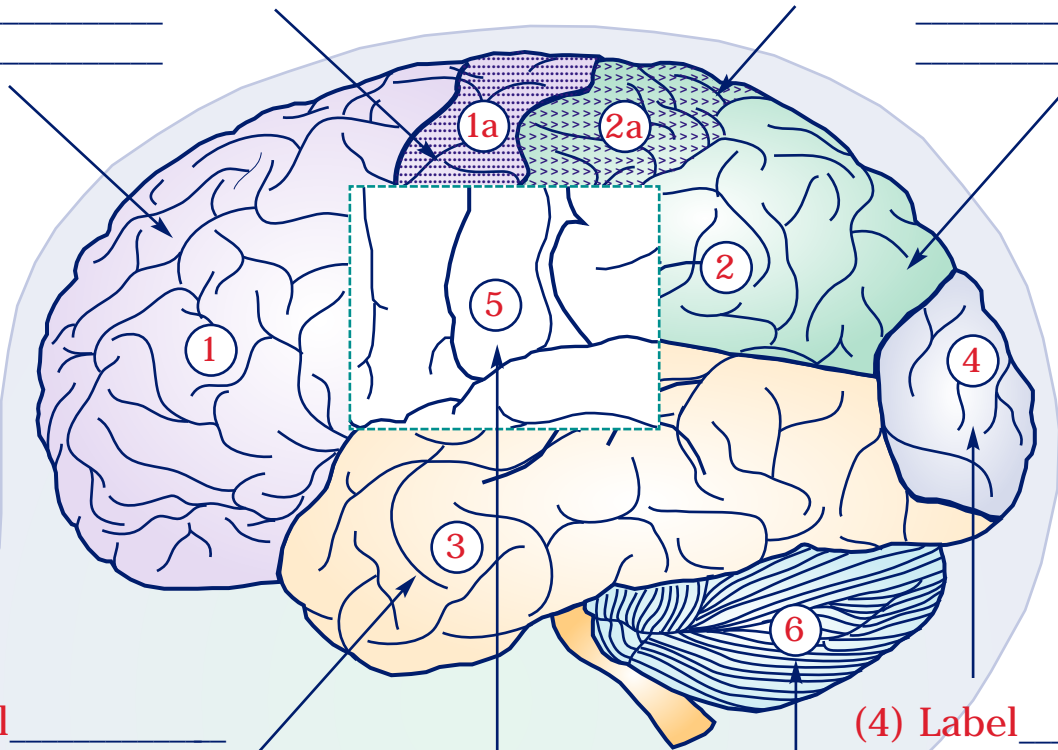


A Piece of Your Mind: Brain Anatomy

Processing Out Activity 1A

Cerebrum and Cerebellum

(1) Label _____ (1a) Label _____ (2a) Label _____ (2) Label _____

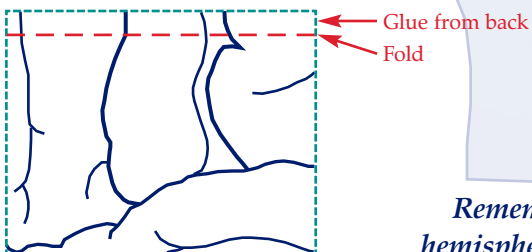


(3) Label _____ (4) Label _____

(5) Label _____

(6) Label _____

*This section will be taped over matching section on brain (dashed line). Additional brain part under flap. Be sure to tape or glue flap into place **BEFORE** coloring.*



Remember: The brain is divided into two halves or hemispheres. There'll be a lobe on each side of the brain.



Cross Section View of Brain

Processing Out Activity 1A

(1) Label _____

(2) Label _____

(3) Does not
show on cross
section view
of brain

(4) Label _____

(5) Does not
show on cross
section view
of brain

**YOU ARE
LOOKING
AT A CROSS-
SECTIONAL
VIEW OF THE
BRAIN.**

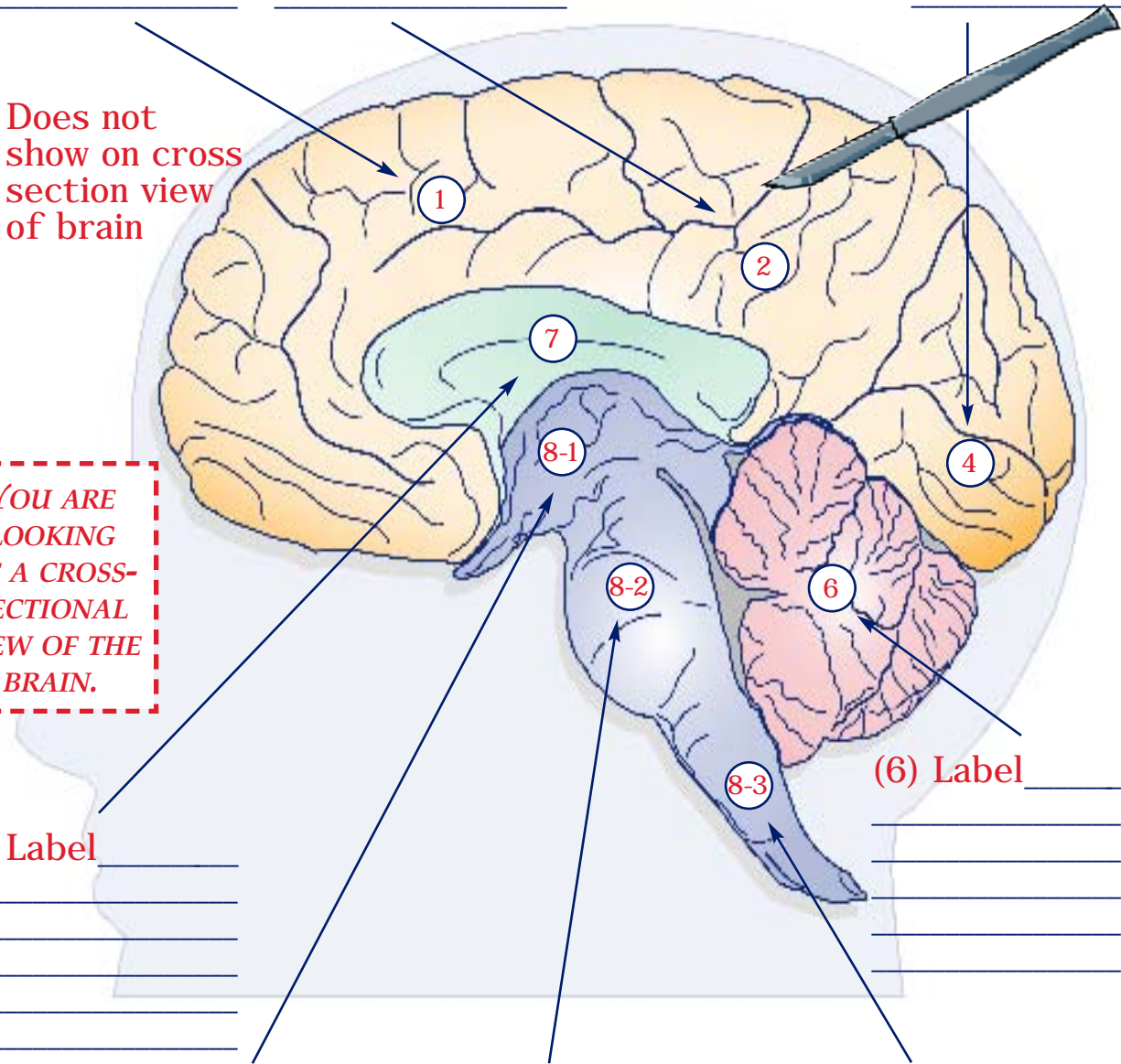
(7) Label _____

(8-1) Label _____

(8-2) Label _____

(8-3) Label _____

(6) Label _____



The Brain: It's All In Your Mind